

BROCHURE

www.innovawood.com



**Towards an integrated European
research and training area
for the forest and wood industry**

1. INNOVAWOOD

InnovaWood is a European network actively supporting innovation in the Forest, Wood-based and Furniture industries. It has a membership of 85 organisations from 22 countries.

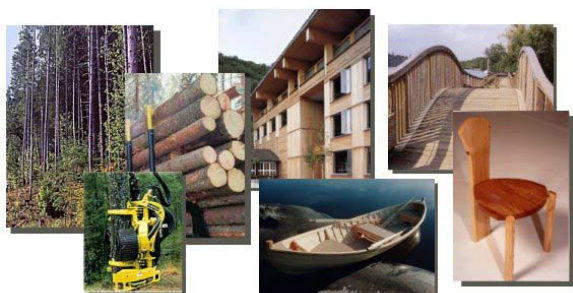
Its members represent all areas of the Forest Wood-Chain and are active in the areas of Research, Education & Training and Technology Transfer.

Brief History

On the 16th of May 2001, the Networks of Eurifi, Eurofortech, Euroligna and Eurowood launched the InnovaWood Initiative in order to create a co-ordinated supporting network infrastructure for innovation and skills development in the Forest, the Woodworking and the Furniture industries. The InnovaWood network was formally convened on 1 January 2003. Financial support for the creation of the network came from the European Commission's fifth framework programme. Under the project "Xyloreach" (QLK5-2001-00608), a thematic network was set up for the forest-wood sector. In addition, an online database of technical information aimed at small enterprises in the sector was created.

2. AIMS

The overall aim of InnovaWood is to bring business benefit to the forestry, wood and furniture chain by providing a forum for its member organisations to contribute more effectively to the development of the sector in Europe.



3. MEMBER SERVICES

The permanent Secretariat to the network provides support and services to members in the following areas:

- Information gathering and processing
- Alerts on calls for proposals under various framework programmes
- Partner searches for new project proposals
- Project coordination and project dissemination
- Knowledge Transfer and added value to completed projects
- Representation to the European Commission and other stakeholders in the sector
- Providing opportunities for enhanced communication through the multilingual InnovaWood Web Portal



4. www.innovawood.com

The InnovaWood web portal plays a key role in the information services that are available to the membership.

Some of its key features are :

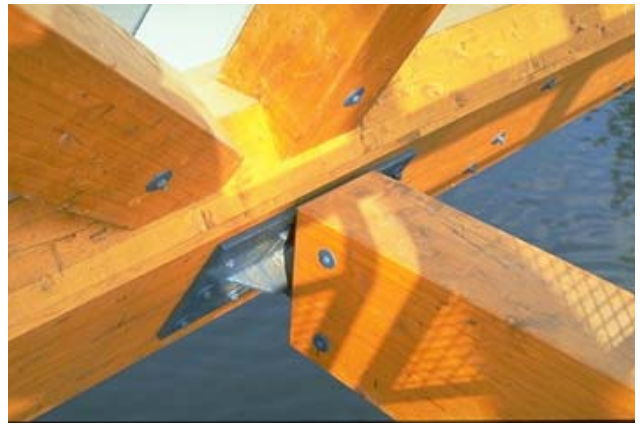
- The InnovaWood Research Database
- News and Events pages
- Members Pages
- Project Specific Information
- Separate Research and Training areas
- Discussion Forums

5. WHO CAN JOIN

InnovaWood welcomes new member organisations from all over Europe. Membership is open and flexible and accommodates the needs of different organisation structures.

To qualify for membership, organisations should be able to demonstrate established competency in research, education, training, technology transfer and/or skills development in the sciences and technologies pertaining to forestry, wood and wood products or furniture.

Membership information is available from the secretariat.



Board together with the Divisional Coordinators and up to five representatives of other European stakeholders co-opted by the Board. At least two of the co-opted members are representatives from European Industry Federations/Associations. The Management Board coordinates the development of InnovaWood strategy within the following five divisions:

1. Research, Technology Development and Innovation
2. Knowledge Transfer
3. Training and Education
4. Environment and Sustainability
5. Integrated Forestry, Wood and Furniture-Chain

6. ORGANISATION

Three bodies are designated to organise the functioning of the InnovaWood Network.

These are:

- General Assembly
- Executive Board
- Management Board

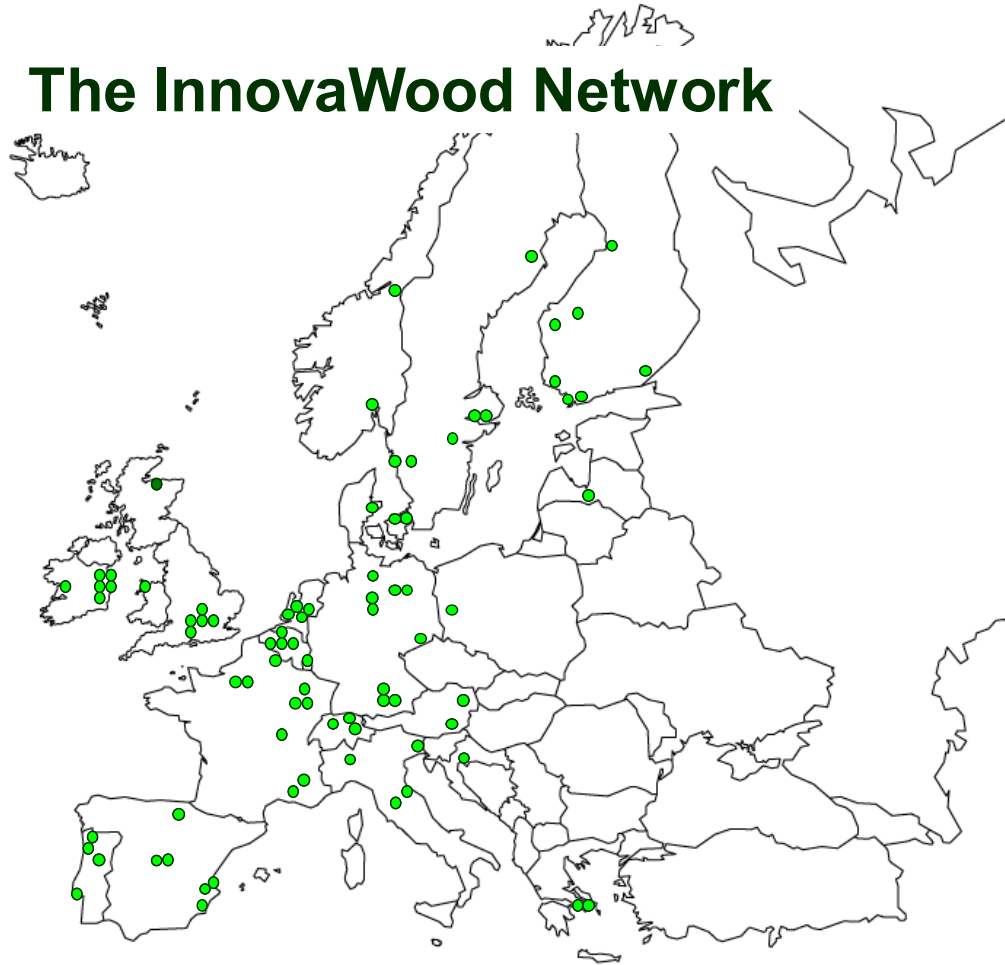
The **General Assembly** consists of all the members of InnovaWood and meets once a year.

The **Executive Board** of Directors comprises the President, Vice-president, Executive directors and the Secretary General.

The **Management Board** comprises the Members of the InnovaWood Executive



The InnovaWood Network



InnovaWood Secretariat
International Office, 107 Lower Baggot Street, Dublin 2, Ireland
Tel: +353 1 676 3181 Fax: +: +353 1 676 3196 Email: office@innovawood.com